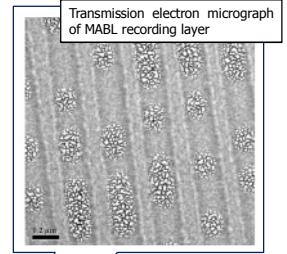
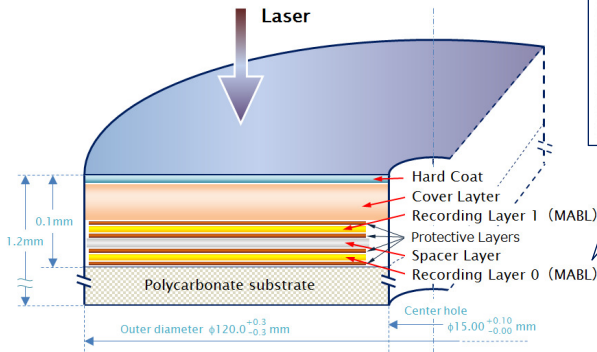


Applications: Digital archiving (libraries, medical, administrative documents)
Compliance (enterprise)
Work requiring long term data storage of 10 years or more

Product Characteristics

A BD-R DL with a 50GB recording capacity. Uses Mitsubishi Kagaku Media's own Metal Ablative Layer (MABL) technology. It is one of the most stable recording layer materials due to its use of ablation to create recording marks, making it suitable for long term storage.

The label side can be given a variety of finishes depending on its intended use, including a high quality printable finish suitable for professional applications.

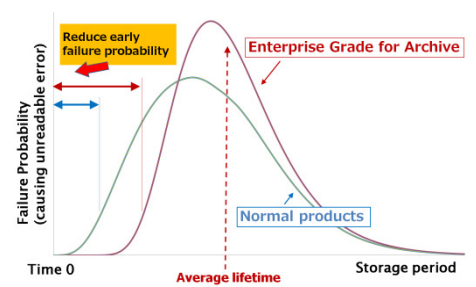
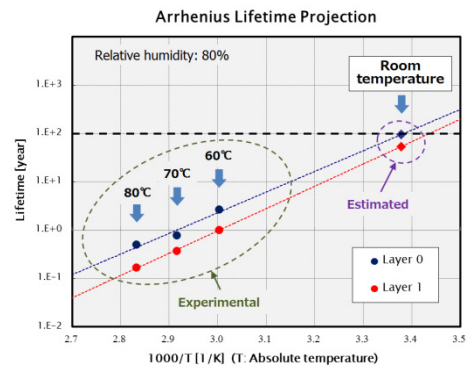


Long-Term Storage Stability of Over 50 Years

Using the Arrhenius equation, the estimated lifetime of Mitsubishi Kagaku Media's Enterprise Grade BD-R 50GB for Archive has been calculated at over 50 years in a 25 degrees Celsius, 80% relative humidity environment *1.



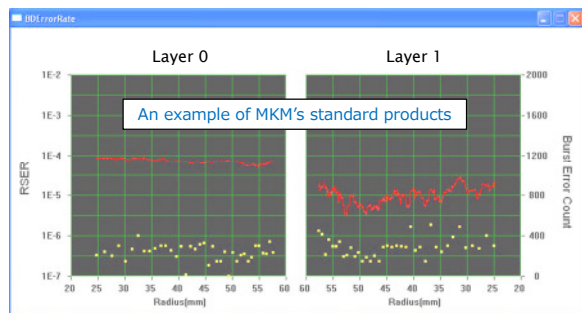
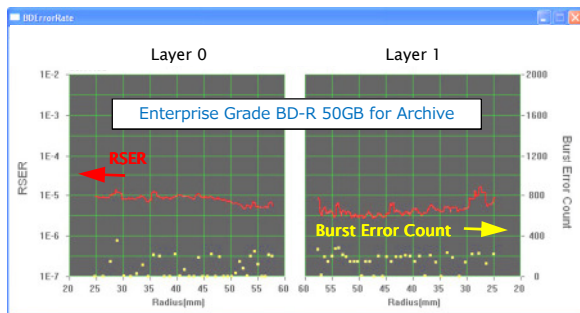
Variation in the lifetime of individual media will, in general, follow the probability distribution shown in the diagram to the lower right. In order to reduce the risk of data becoming unreadable earlier than anticipated, our Enterprise Grade BD-R 50GB for Archive is manufactured at our own factory, and each lot is subjected to validation through accelerated aging tests. Only discs that have passed test criteria tighter than those for normal products are shipped.



- *1 We recommend the following storage environment:
- Temperature: 10 to 25 degrees Celsius
 - Humidity: 40% to 60%RH
 - Low dust
 - A fireproof, locked, condensation free storage area that does not receive direct sunlight
 - Free of substances that could damage the media

Initial Error Rate and Burst Error Count

RSER *2 (the data underlined in red in the below diagrams) and burst error *3 counts (yellow dots in the below diagram) are managed to tighter criteria than those for standard products, and we guarantee recording quality in the discs' initial state due to its significant effect on long-term storage stability.



Test results using a Pioneer professional archive drive with testing facilities

*2 Abbreviation for Random Symbol Error Rate. This is the BD error rate measured by excluding bust errors of more than 40 bytes in length.
 *3 These are errors produced locally by media defects, scratches, dirt, etc.

First Party Support of Dedicated Drive Systems

One of the most important factors affecting long-term storage stability is initial recording signal quality. Mitsubishi Kagaku Media's Enterprise Grade BD-R 50GB for Archive records your irreplaceable digital data in optimal conditions with the support of a dedicated drive system.

We are able to pursue optimum specifications through coordination with drive and system manufacturers.

1. Optical discs are designed for long-term storage

Optical discs are backed by over 20 years of technological advance and successful use since the advent of MO and CD-R, and have the following characteristics as long term storage media.

- 1) Moving parts and specialized circuitry are not required while data is stored.
- 2) Usage costs are low (low power usage, long migration period), and the cost to the environment is small.
- 3) Media are truly write-once, and falsification of data is theoretically impossible.

2. Optical discs are resilient to environmental extremes

Thanks to the durability provided by optical discs, the data stored on Mitsubishi Kagaku Media's Enterprise Grade BD-R 50GB for Archive will not be destroyed even in the event that the disc is exposed temporarily to extreme conditions (immersion in fresh water or 5% salt water, high temperature or humidity, low temperature, corrosive environmental gases, etc.) *4.

*4 Storage in such environments is not recommended. Playback is performed after wiping away dirt that adhered to the surface of the disc during testing. It is recommended that data that can be played back after recovery processing be immediately backed up.

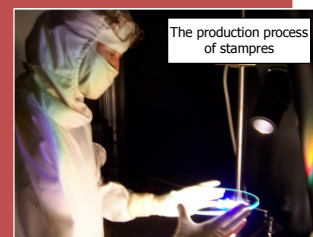
3. The BD format gives peace of mind for future support

Recorded data can be retrieved with any consumer BD drives. The media do not need a special format.

Mitsubishi Kagaku Media has manufactured and supplied optical discs for professional use (MO, UDO) for over 20 years from its own factory. We perform comprehensive manufacturing and quality management, creating everything from stampers (for optical disc mastering) to the discs themselves entirely within the company.

In 2004, Mitsubishi Kagaku Media began manufacture and sales of the world's first multiple layer recordable disc (DVD+R DL).

Mitsubishi Kagaku Media is the world's No.1 vendor of branded consumer optical discs (CD-R, DVD R) brand *5.



*5 Based on total sales of recordable CD/DVD/BD between 2005 and 2011. According to data from Japan Recording Media Industries Association and Santa Clara Consulting Group.

Product Specification

Part Number	PABS25RDJP	PABS25RDTH	PABS25RDWL
Capacity	50GB		
Media type	Write-once		
Recording layer	Metal Ablative Layer (MABL)		
Label	Ink-jet printable 22 to 118mm in diameter	Thermal printable 22 to 117mm in diameter	(Non-printable white label)
Packaging	A pair of 25p cakeboxes in a carton (50pcs/carton)		

 **MITSUBISHI KAGAKU MEDIA**

Global Sales Promotion Department
 e-mail: MKM-EnterpriseDisc@cc.m-kagaku.co.jp
 www.mcmedia.co.jp/enterprise/index_e.html



Contact:

www.pdoeurope.com

+49 611 506959